

ALAMO, TENNESSEE

Market Guide

crockettchamber.com

City Contact Information



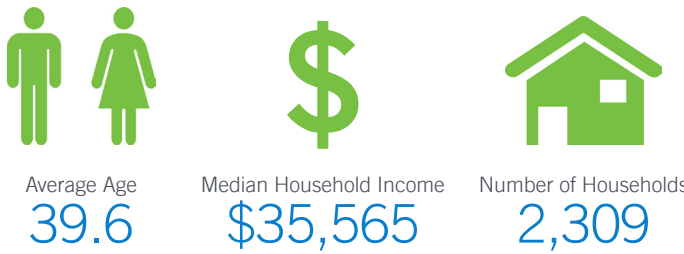
Charlie Moore
Executive Director
cmoore@crockettchamber.com

25 North Bells Street
Alamo, TN 38001

731.696.5120 office
731.617.1784 cell

crockettchamber.com

Demographics



Major Employers & City Information

Company Name	Employees
ABB	165
Alamo Nursing and Rehab	125
Alamo City School System	87
Crockett County School System	84
Tennessee Tractor	50
Southern Pride	36

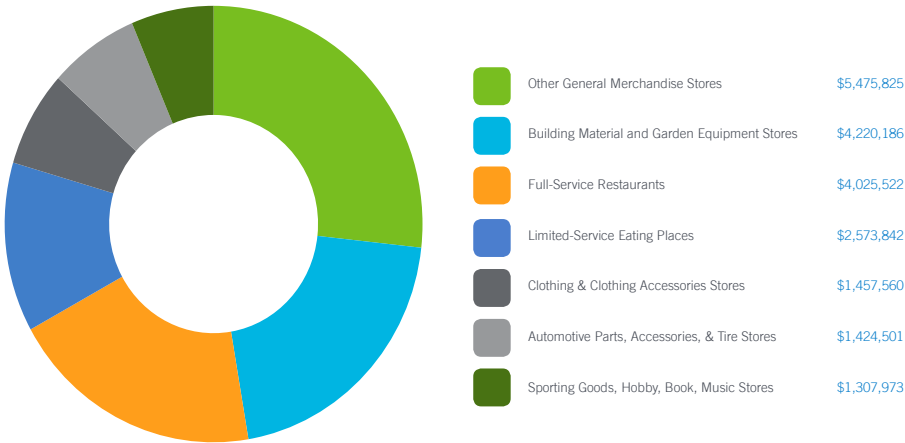
Crockett County, located in the central part of West Tennessee, contains five incorporated towns: Alamo, Bells, Friendship, Gadsden and Maury City.

There are few places left in America like this wonderful community in West Tennessee where children still play in their yard and neighbors greet each other on the street and in the local grocery. As you will soon learn, there are a lot of great stories to tell about Crockett County.

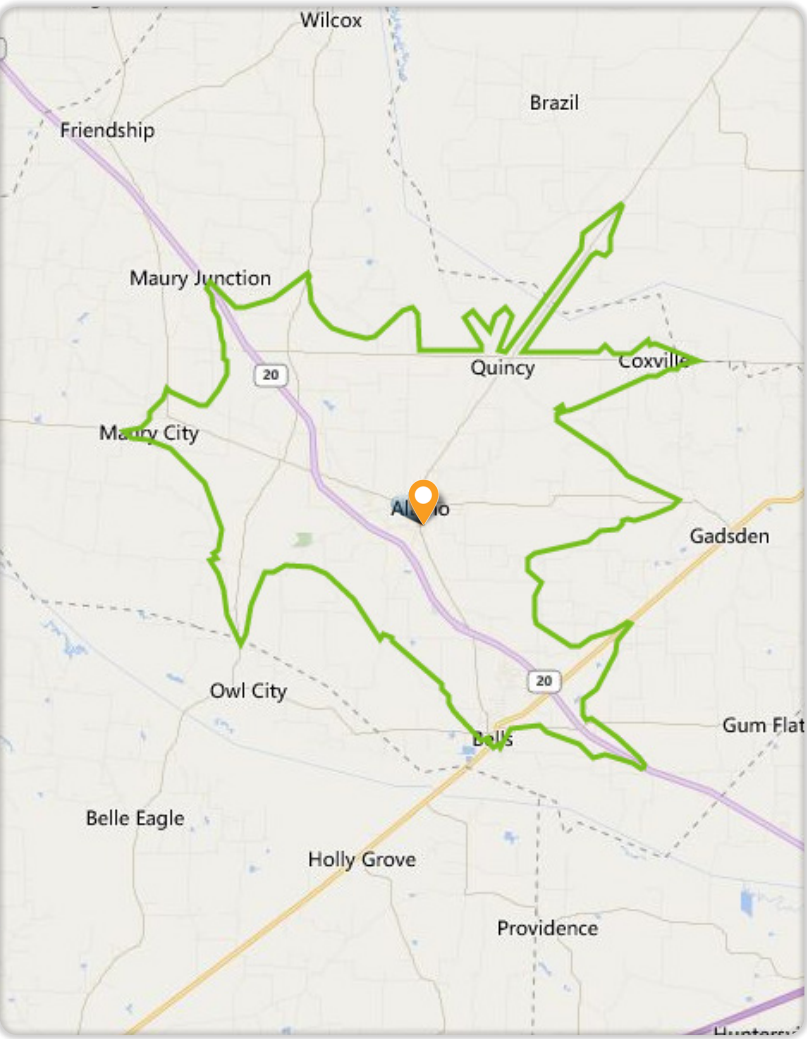
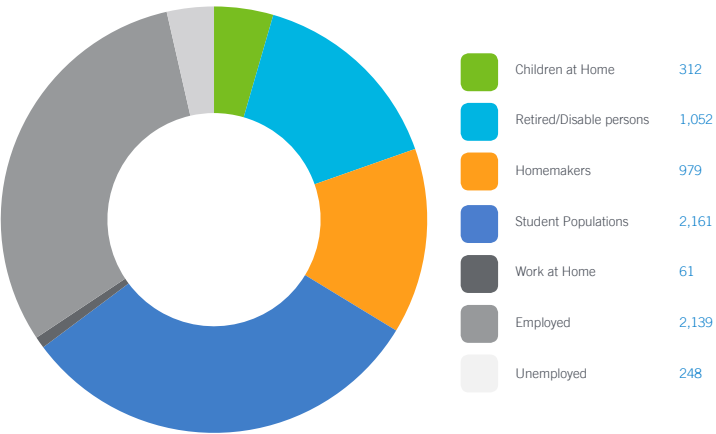
Crockett County is located in the heart of West Tennessee. Those familiar with the area say it's just twenty minutes from Jackson or Dyersburg. Others say it's between Humboldt and Brownsville. If none of those places sound familiar, we'll just say it's between Nashville and Memphis. However you say it, folks around here call it home.

GAP Analysis \$20,485,409

The Gap Analysis is a summary of the primary spending Gaps segmented by retail category. It measures actual consumer expenditures within the City's trade area and compares it to the potential retail revenue generated by retailers in the same area. The difference between the two numbers reflects leakages, or the degree to which consumers travel outside the community for certain retail goods and services. The Gap analysis is a useful tool to gauge retail supply and demand within the community.



Daytime Population 6,952

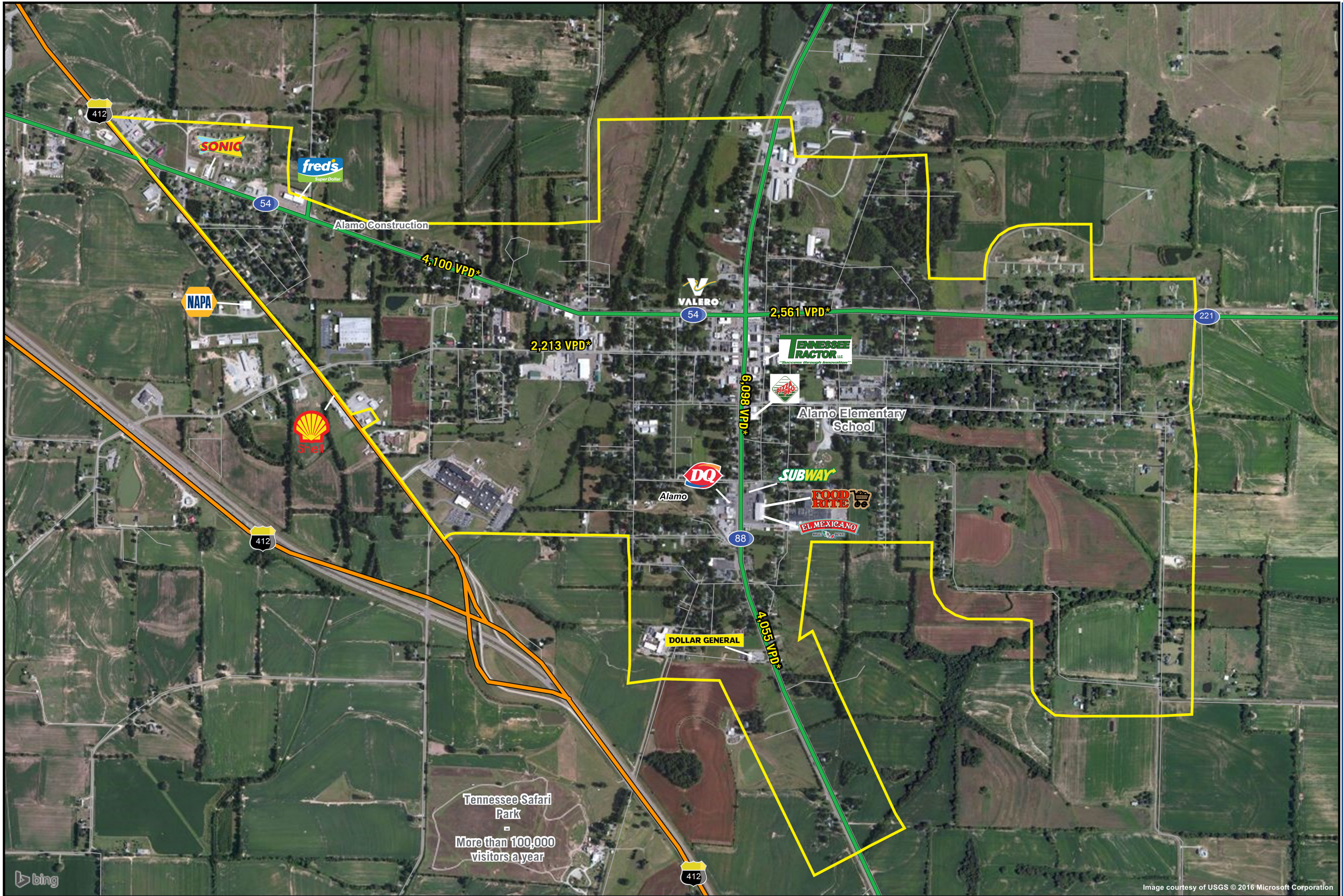


DEMOGRAPHIC PROFILE	3 Mile Radius	10 Mile Radius
2015 Estimated Population	3,434	14,030
Daytime Population	4,922	11,784
Median HH Income	\$33,121	\$37,393
Number of Households	1,322	5,463

DEMOGRAPHIC PROFILE	5 Minute Drive Time	10 Minute Drive Time	15 Minute Drive Time
2015 Estimated Population	2,779	6,005	12,157
Daytime Population	4,155	6,952	10,864
Median HH Income	\$33,207	\$35,565	\$37,068
Number of Households	1,052	2,309	4,741

*Source: STI PopStats





ALAMO, TENNESSEE

Major Retail & Restaurants